

BELZONA RESTORES VALVES TO BETTER THAN NEW CONDITION

CUSTOMER

Paper Mill in Northwest Florida, U.S.A.

APPLICATION DATE

1992

APPLICATION SITUATION

Swing pin housings of non-return check valves.

PROBLEM

Housing had eroded/corroded to the point where the valve flap would not seat (seal) properly, allowing partial flow in the wrong direction

PRODUCTS

Belzona® 1111 (Super Metal)

Belzona® 9411 (Release Agent)

SUBSTRATE

Cast iron

APPLICATION METHOD

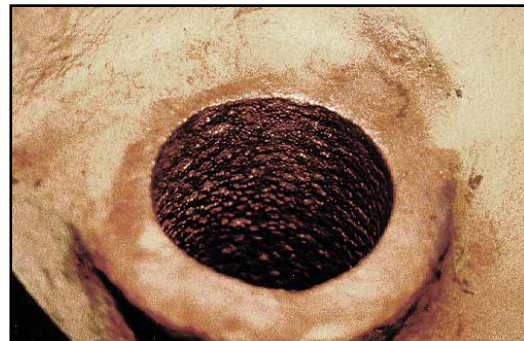
The application was carried out in accordance with Belzona Know-How System Leaflet VPF-7.

BELZONA FACTS

The customer averted costly replacement or welding and line boring. Several valves were repaired. New flappers were installed and the inside of the valve bodies were rebuilt with Belzona® 1111 (Super Metal).

PICTURES

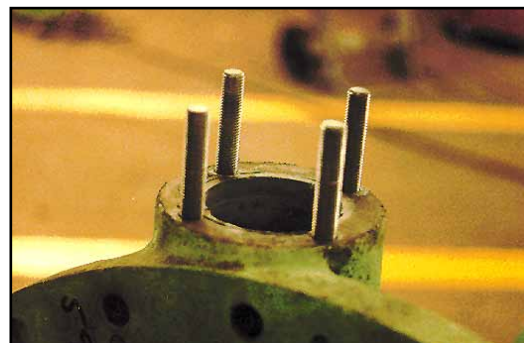
1. Corroded housing.
2. Molding technique using fabricated dummy pin, Belzona® 1111 and Belzona® 9411 are employed.
3. Finished repair.



1.



2.



3.

For more examples of *Belzona Know-How In Action*, please visit <http://khia.belzona.com>



ISO 9001:2008
Q 09335
ISO 14001:2004
EMS 509612

Belzona products are
manufactured under an ISO
9000 Registered Quality
Management System.

UK • USA • Canada • China
www.belzona.com


BELZONA®
Repair • Protect • Improve